

# Turbocharger Services

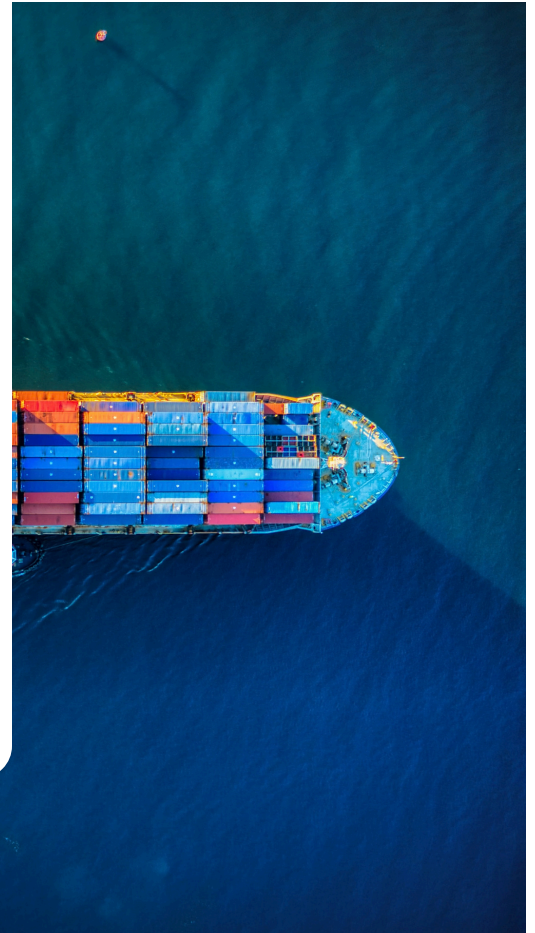
Extend engine lifetime and improve efficiency with reliable turbocharger services



## Why it matters

Turbochargers play a critical role in engine performance, air management, and overall operational efficiency. Without proper inspection, monitoring, and maintenance, hidden wear or imbalance can reduce efficiency, accelerate component degradation, and increase the risk of unexpected failures and costly downtime.

A tailored service approach allows maintenance activities to be planned according to the operating condition of each turbocharger, helping maintain performance and operational reliability. Regular servicing helps detect early signs of wear, maintain efficiency, and extend the lifetime of your turbocharger while keeping your operations running smoothly.



## Turbocharger overhaul and reconditioning services

A complete turbocharger overhaul follows a structured process designed to restore component condition and support reliable operation.

Each unit undergoes:

- Full dismantling and industrial cleaning
- Dimensional inspection and NDT crack detection
- Evaluation of rotor group, nozzle ring, casings, and bearing assembly against OEM tolerances
- Replacement of seals and bearings
- Surface restoration & alignment correction
- Controlled reassembly under specified torque



# Reliable turbocharger services that support performance and asset longevity

Proper maintenance, inspection, and repair of turbochargers are essential to ensure efficient engine operation, stable performance, and reduced operational downtime:



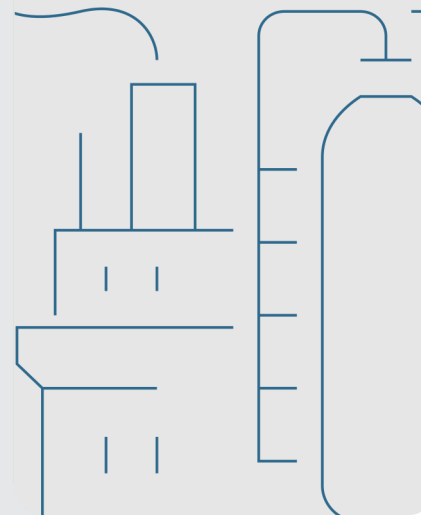
## Workshop capabilities

- Blade repair
- Ultraviolet crack detection (NDT)
- Hardness testing
- Hydrostatic testing
- Gas casing wall thickness measurements
- Dynamic balancing (100-2,000 kg)
- Micro-blasting
- Metal spraying
- Hydraulic testing
- Precision machining
- Complete turbocharger overhauls

## Documentation & reporting

*All services include structured and technical documentation:*

- Inspection measurements
- Dimensional measurements
- Balancing reports
- Full traceability and transparency
- Maintenance recommendations



## 24/7 emergency support

In critical situations, restoring stability requires more than rapid response. It demands technical expertise, practical experience, and effective execution. BWSC Panama supports asset owners with fast technical assessment, targeted corrective actions, and structured recovery to safely restore operations and minimize downtime.

## Quality assurance

All maintenance, repair, and overhaul work is performed in accordance with strict OEM requirements and controlled quality procedures. Our certified technicians and engineers ensure precise execution and full traceability throughout every stage of the process.

# Operational Excellence

Operating in the Panama Canal requires precision, responsiveness, and reliable execution. BWSC Panama is structured to support time-critical marine and industrial operations where delays are not an option.

By combining advanced workshop capabilities with rapid on-site and onboard services, we ensure efficient project execution, minimized downtime, and seamless coordination from planning through completion.

## BWSC



**BWSC Panama** (workshop and office)

Warehouse NO. 10 - D

Albrook Free Zone

East Marginal Street

Ancon, Panama

P: +507 388 4478

[www.bwsc.com](http://www.bwsc.com)

[servicesales@bwsc.com.pa](mailto:servicesales@bwsc.com.pa)