

The image shows a large industrial facility, likely a power plant, with a complex network of pipes, walkways, and structural beams. In the foreground, a large, cylindrical component, possibly a generator or turbine part, is visible. The scene is lit with industrial lights, creating a high-contrast environment. A large, semi-transparent orange shape is overlaid on the image, serving as a background for the text.

BWSC

BWSC Spare Parts Supply

# Spare Parts Supply

Supporting reliable generator operation while extending component lifetime and reducing maintenance costs

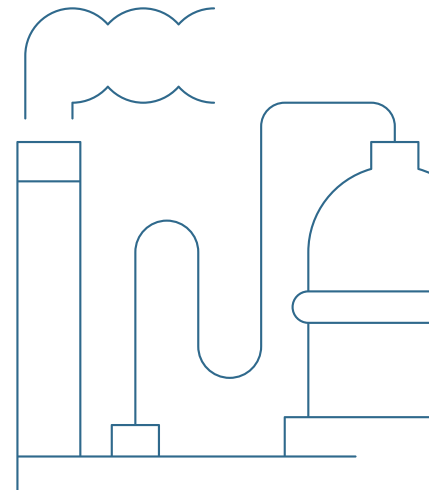
# Keeping Your Engines Running with the Right Parts

Protecting engine performance and reliability through expert parts supply and technical support

As power plants and engine installations age, sourcing critical spare parts becomes increasingly challenging. When original components are discontinued or difficult to obtain, equipment reliability, performance, and long-term asset integrity can be compromised.

BWSC provides spare parts aligned with OEM-requirements for marine, power generation, and industrial engines, helping customers maintain reliable operations while extending equipment life. Our dedicated spare parts specialists support everything from component identification and sourcing to logistics and technical guidance.

With decades of international experience and more than a century of Danish industrial and marine engineering heritage, we deliver the right spare parts solutions tailored to your operational requirements. Backed by full traceability, warranty-supported supply, and expert technical assistance, BWSC ensures that the right parts are delivered exactly when and where they are needed.



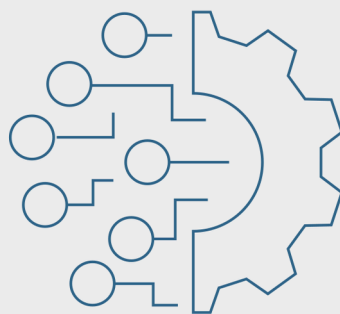
## Delivering the Right Parts for Reliable Operation

- OEM-approved spare parts
- Multi brand coverage across engine types
- Full traceability and warranty-backed supply
- Short lead times and global logistics support
- Technical assistance for correct part selection

## Fixed supply model for critical spare parts

BWSC Panama offers critical spare parts stock agreements that ensure the availability of high-impact components identified in collaboration with the customer, reducing downtime while optimizing inventory levels, alongside long-term spare parts supply agreements that enable predictable procurement, support cost control, and align with maintenance strategies, complemented by tailored overhaul spare parts packages designed around planned maintenance intervals to streamline procurement and ensure all required components are readily available.

BWSC offers expert advice on technology selection, ensuring alignment with defined boundary conditions and overall operational requirements.



# Engine Spare Parts Supply

OEM-aligned components supporting reliable operation and long-term performance

Spare parts scope	Description
<b>Scope of supply:</b> can be tailored by any combination of below services.	<i>Sourced from authorized OEM partners</i>
<b>Piston rings (2T/4T)*</b>	Highly stressed components ensuring gas sealing, wear control, and lubrication performance, supporting stable compression and reduced oil consumption.
<b>Stuffing Boxes (2T)*</b>	A critical sealing barrier separating combustion space from the crankcase, maintaining controlled lubrication conditions, minimizing contamination, and ensuring stable piston rod sealing performance.
<b>Cylinder Liners (2T/4T)*</b>	Critical wear components influencing lubrication, efficiency, and service life, supplied to OEM material and surface specifications for stable oil retention and extended overhaul intervals.
<b>Rotocaps(4T)*</b>	Ensures controlled valve rotation under high thermal and mechanical loads, supporting stable combustion, sealing, and maintenance intervals.
<b>Cylinder covers (2T) &amp; Cylinder Heads (4T)*</b>	Operating under extreme thermal and pressure conditions, these components maintain structural integrity and sealing, ensuring durability and reliable long-term performance.
<b>Turbocharger Components</b>	Turbocharger components operating under high speeds and thermal loads directly impact combustion efficiency and exhaust performance.
<b>Pistons &amp; Piston Crowns (2T/4T)*</b>	Operating under cyclic thermal and mechanical stress, pistons ensure stable combustion, efficient load transfer, and high-temperature structural integrity.
<b>Bearing Shells (2T/4T)*</b>	Maintains load distribution and oil film stability within the cranktrain, ensuring reliable operation under continuous high load.
<b>Critical Spare Parts Stock Agreement</b>	Secures critical component availability, minimizing downtime while optimizing inventory levels.
<b>Overhaul Spare Parts Packages</b>	Tailored packages aligned with maintenance intervals to streamline procurement and ensure component availability.
<b>Spare Parts Supply Agreements</b>	Long-term supply solutions supporting predictable procurement, cost control, and maintenance planning.

\*2T refers to 2-stroke engine and 4T refers to 4-stroke engine

# Multi-Brand Support

Securing reliable supply of OEM approved spare parts for a wide range of engine brands



# WÄRTSILÄ

**Everllence**

**JENBACHER**  
INNIO

**CATERPILLAR**

**METurbo**  
MITSUBISHI HEAVY INDUSTRIES, LTD.

**HYUNDAI**  
**HIMSEN**



**Rolls-Royce®**

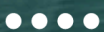
*Additional brands available upon request. Scope and availability depend on engine type and model, supported by technical guidance for correct selection.*

# Operational Excellence

Operating in the Panama Canal requires precision, responsiveness, and reliable execution. BWSC Panama is structured to support time-critical marine and industrial operations where delays are not an option.

By combining advanced workshop capabilities with rapid on-site and onboard services, we ensure efficient project execution, minimized downtime, and seamless coordination from planning through completion.

## BWSC



**BWSC Panama** (workshop and office)

Warehouse NO. 10 - D

Albrook Free Zone

East Marginal Street

Ancon, Panama

P: +507 388 4478

[www.bwsc.com](http://www.bwsc.com)

[servicesales@bwsc.com.pa](mailto:servicesales@bwsc.com.pa)

